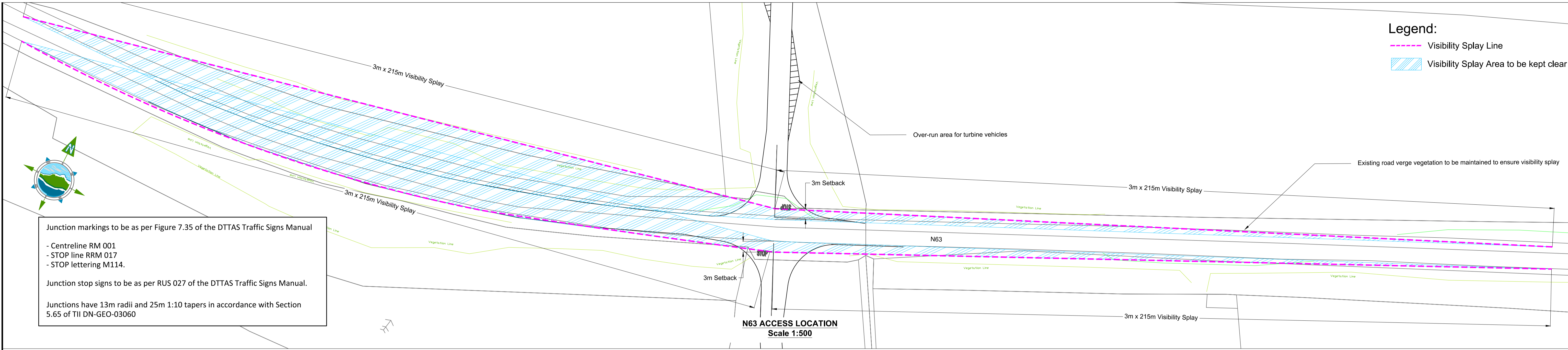


- Legend:**
- Visibility Splay Line
  - ▨ Visibility Splay Area to be kept clear



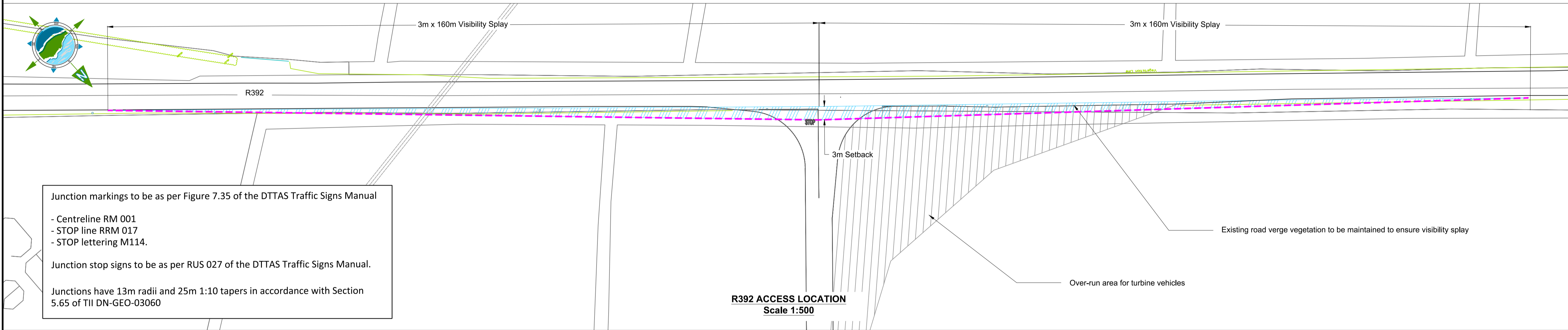
Junction markings to be as per Figure 7.35 of the DTTAS Traffic Signs Manual

- Centreline RM 001
- STOP line RRM 017
- STOP lettering M114.

Junction stop signs to be as per RUS 027 of the DTTAS Traffic Signs Manual.

Junctions have 13m radii and 25m 1:10 tapers in accordance with Section 5.65 of TII DN-GEO-03060

**N63 ACCESS LOCATION**  
Scale 1:500



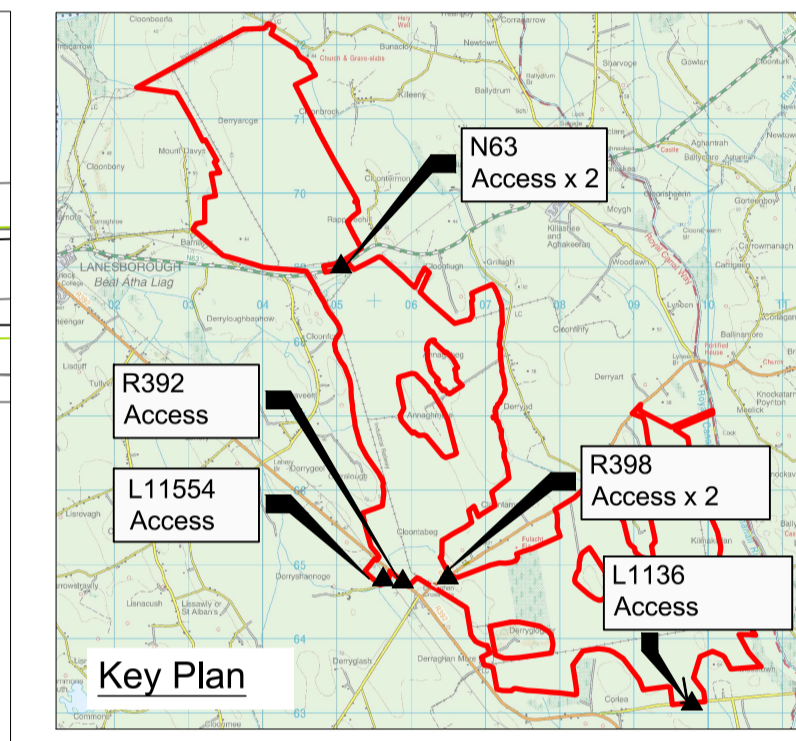
Junction markings to be as per Figure 7.35 of the DTTAS Traffic Signs Manual

- Centreline RM 001
- STOP line RRM 017
- STOP lettering M114.

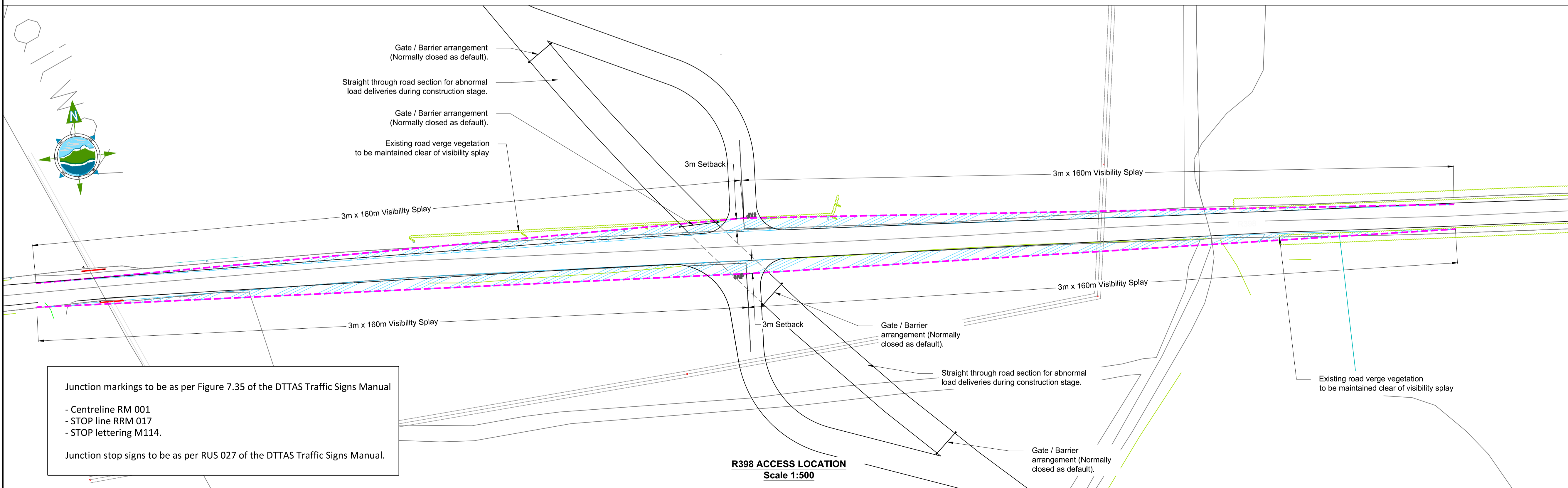
Junction stop signs to be as per RUS 027 of the DTTAS Traffic Signs Manual.

Junctions have 13m radii and 25m 1:10 tapers in accordance with Section 5.65 of TII DN-GEO-03060

**R392 ACCESS LOCATION**  
Scale 1:500



Rev	Date	Description	By	Chkd.
A	Jan. '19	PLANNING ISSUE	MN	ST



Junction markings to be as per Figure 7.35 of the DTTAS Traffic Signs Manual

- Centreline RM 001
- STOP line RRM 017
- STOP lettering M114.

Junction stop signs to be as per RUS 027 of the DTTAS Traffic Signs Manual.

**R398 ACCESS LOCATION**  
Scale 1:500

Client: **BORD NA MÓNA**  
Naturally Driven

Project: **DERRYADD WIND FARM**

Title: **SITE ENTRANCE & VISIBILITY SIGHTLINE GENERAL ARRANGEMENTS - Sheet 1 of 2 -**

Scale @ A1: **As Shown**

Prepared by: **M.Nolan**    Checked: **S. Tinnelly**    Date: **January 2019**

Project Director: **D. Grehan**

Drawing Status: **Planning**

**TOBIN**  
Patrick J. Tobin & Co. Ltd.

TOBIN Consulting Engineers,  
Block 10-4, Blanchardstown Corporate Park,  
Dublin 15, Ireland.  
tel: +353-(0)1-8030406  
fax: +353-(0)1-8030409  
e-mail: dublin@tobin.ie  
www.tobin.ie

Drawing No.: **10325-2042**    Revision: **A**